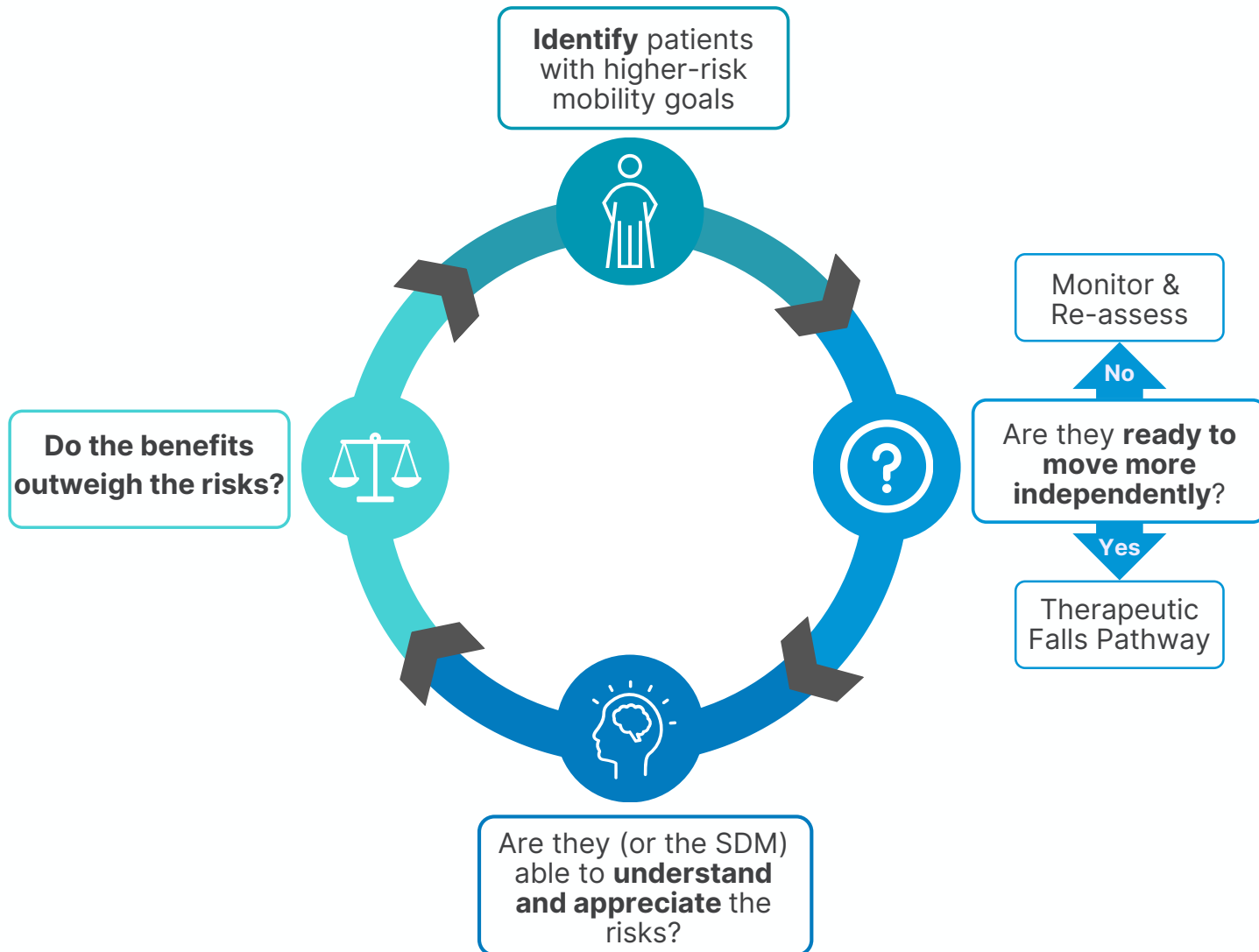


Identifying People for Therapeutic Falls



Common Profile of Participants

- ✓ Transitioning from supervision to independent mobility
- ✓ Improving, but remain at risk for falls
- ✓ Need to be independent in these activities in the community and are a stated patient goal
- ✓ Capable of making shared decisions about risk, or SDM is able to participate in decision-making process